

Lighting Solutions & Fire Systems

Quartzelec delivers a significant project to upgrade and re-design lighting solutions, fire systems and replacement of ceilings in all areas at a major client in the Northwest, UK

HOUSING ASSOCIATION | LIGHTING & FIRE SYSTEMS | NORTH WEST

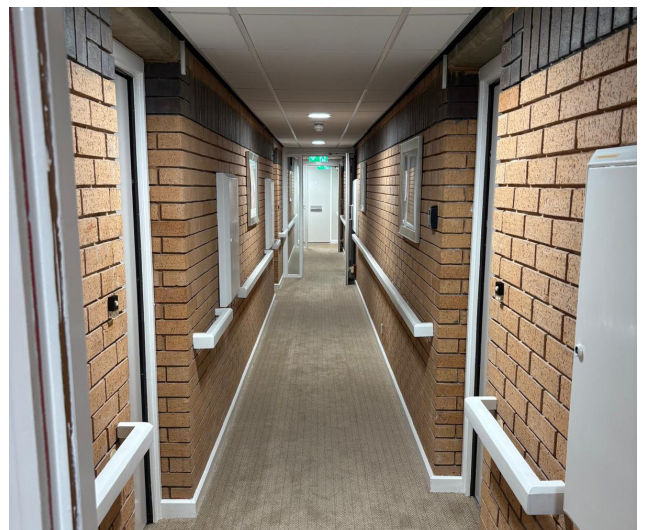
Our Customer's Challenge

A leading not-for-profit provider of Retirement Living and Extra Care for older people of modest means, operates in 215 local authority areas across England. Managing over 24,000 Retirement Living and Extra Care properties and delivering more than 49,000 hours of social care each week, the organisation faced a significant challenge across its national property portfolio: outdated and inefficient lighting systems were driving up energy consumption and operational costs, while also impacting the comfort and safety of residents. At Northwest Court, these issues were compounded by an ageing fire alarm system and the need to meet stricter energy performance standards. The client required a modern, compliant solution that would improve energy efficiency and safety whilst maintaining a welcoming and comfortable environment for older residents—ensuring minimal disruption to those living on-site. With tenants in residence throughout, our team ensured all works were carried out safely, cleanly, and with minimal disruption, guided by a comprehensive risk assessment and method statement.

The Quartzelec Solution

To address the challenges at Northwest Court, Quartzelec delivered a tailored solution that aligned with the Housing Association's environmental and operational goals. Leveraging our strong understanding of their estate and requirements, we proposed a best-fit lighting and fire alarm upgrade that met both compliance standards and resident needs from the outset.

Working in partnership with Lux Bright Lighting, one of our preferred suppliers, we implemented a modern lighting system that significantly improved energy efficiency, reduced maintenance demands, and enhanced the overall ambience of communal areas. The decision to replace the grid ceiling enabled seamless integration of the new lighting design, while also futureproofing the space for ongoing use.



The Quartzelec **Solution** (cont'd)

The fire alarm system was also brought up to current standards, replacing the outdated L2 system with a new, state-of-the-art solution. This included an independent Part 6 system in each of the 36 flats, integrated with the court's nurse call system and capable of automatically alerting emergency services when required.

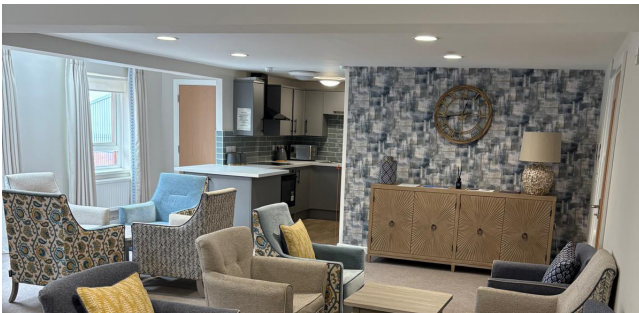
This dual-layered approach ensures faster, more accurate incident detection while reducing false alarms and unnecessary callouts—delivering peace of mind for residents and operational efficiency for the Housing Association.



Key Benefits

The project was delivered efficiently and with minimal disruption to tenants, thanks to detailed planning, risk assessments, and a clear understanding of the live environment. The result is a safer, more energy-efficient building that supports the Housing Association's wider sustainability initiatives and delivers long-term cost savings through reduced energy consumption and system maintenance.

- Sophisticated Lighting Solutions:** Installation of advanced lighting systems to enhance both aesthetics and energy efficiency
- Financial Savings:** Energy reductions due to the efficiency of the new fittings and their outputs
- Fire Alarm Systems and Life Safety Supplies:** Comprehensive safety systems were installed to ensure resident protection in the event of emergencies. Communal areas were fitted in accordance with BS 5839-6 Category L2, meeting Housing Association specifications, while domestic properties were equipped to BS 5839 standards and integrated with the Warden Call system to provide out-of-hours support
- Smooth delivery:** Completed in line with the programmed six-week on-site lead time



“Working with Quartzelec was a pleasure, they offered excellent project management skills and managed their direct employees and subcontractor with excellent results. The project ran to budget and hit the relevant milestones ensuring completion on time whilst delivering high quality of workmanship with minimal defects. I will have no hesitation using Quartzelec again and in particular I look forward to working with Craig in the future.” - Client Building Surveyor

